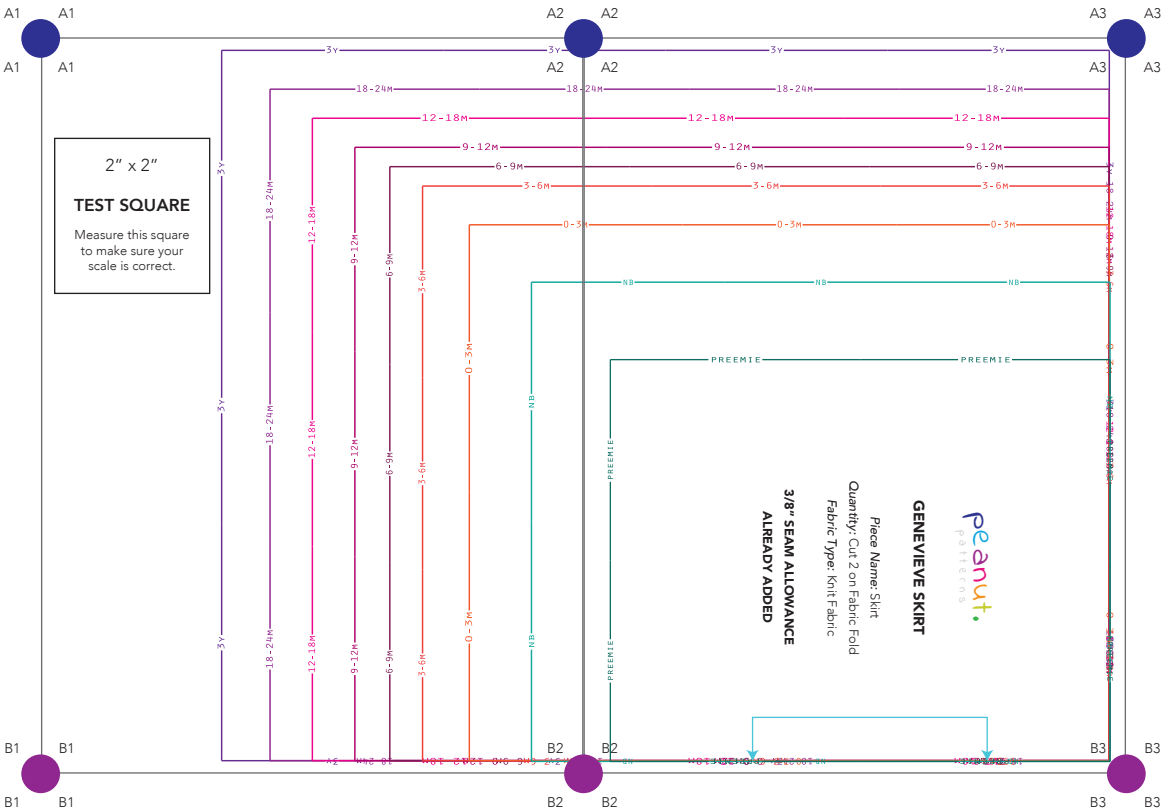


THIS PAGE IS NOT A PART OF THE PATTERN

**THIS IS WHAT THE PATTERN WILL LOOK LIKE
ONCE TAPED TOGETHER**

If you are just starting to sew, or new to PDF patterns, wait to cut your pattern pieces until you have taped all the pages together.



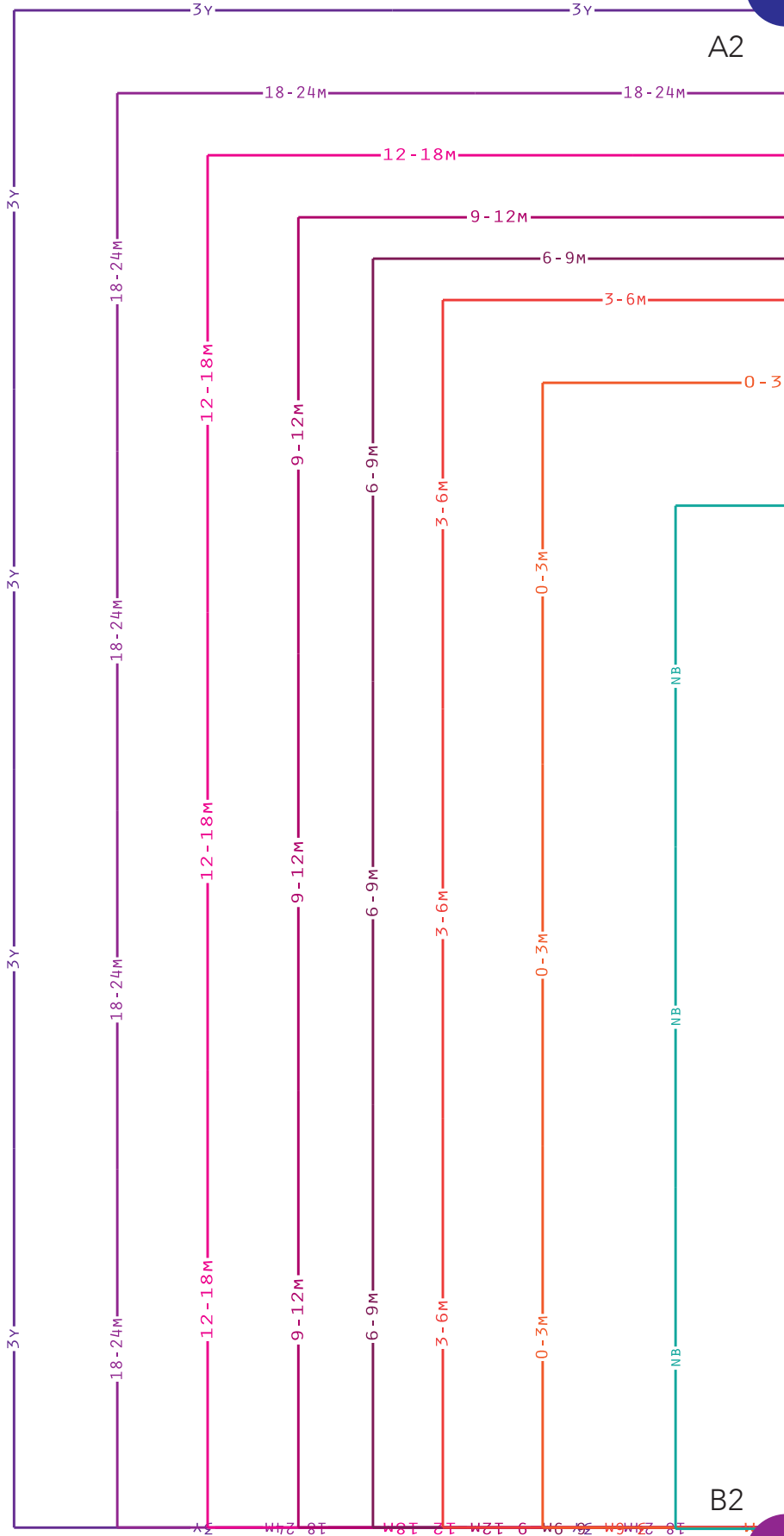
A1

A2

2" x 2"

TEST SQUARE

Measure this square to make sure your scale is correct.



B1

B2

