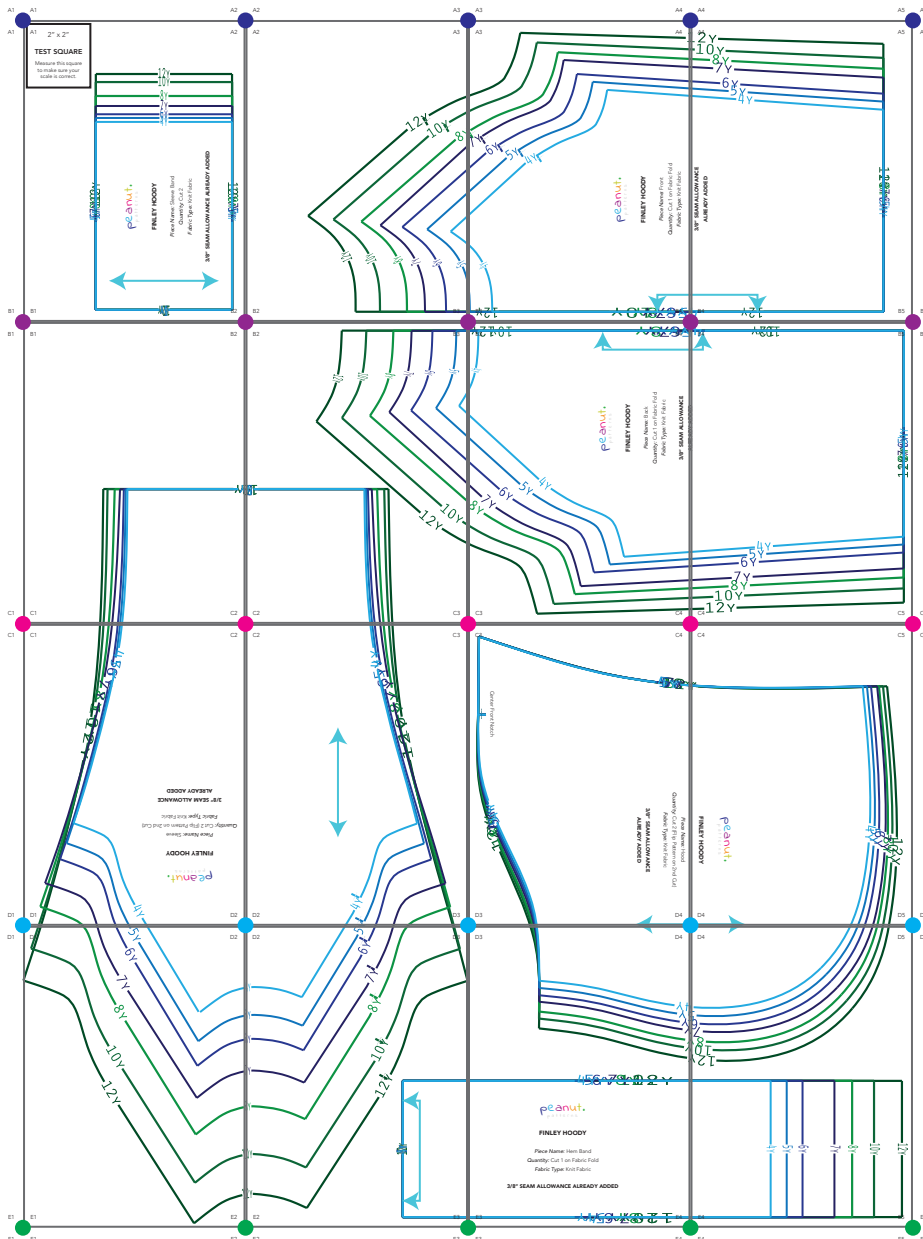
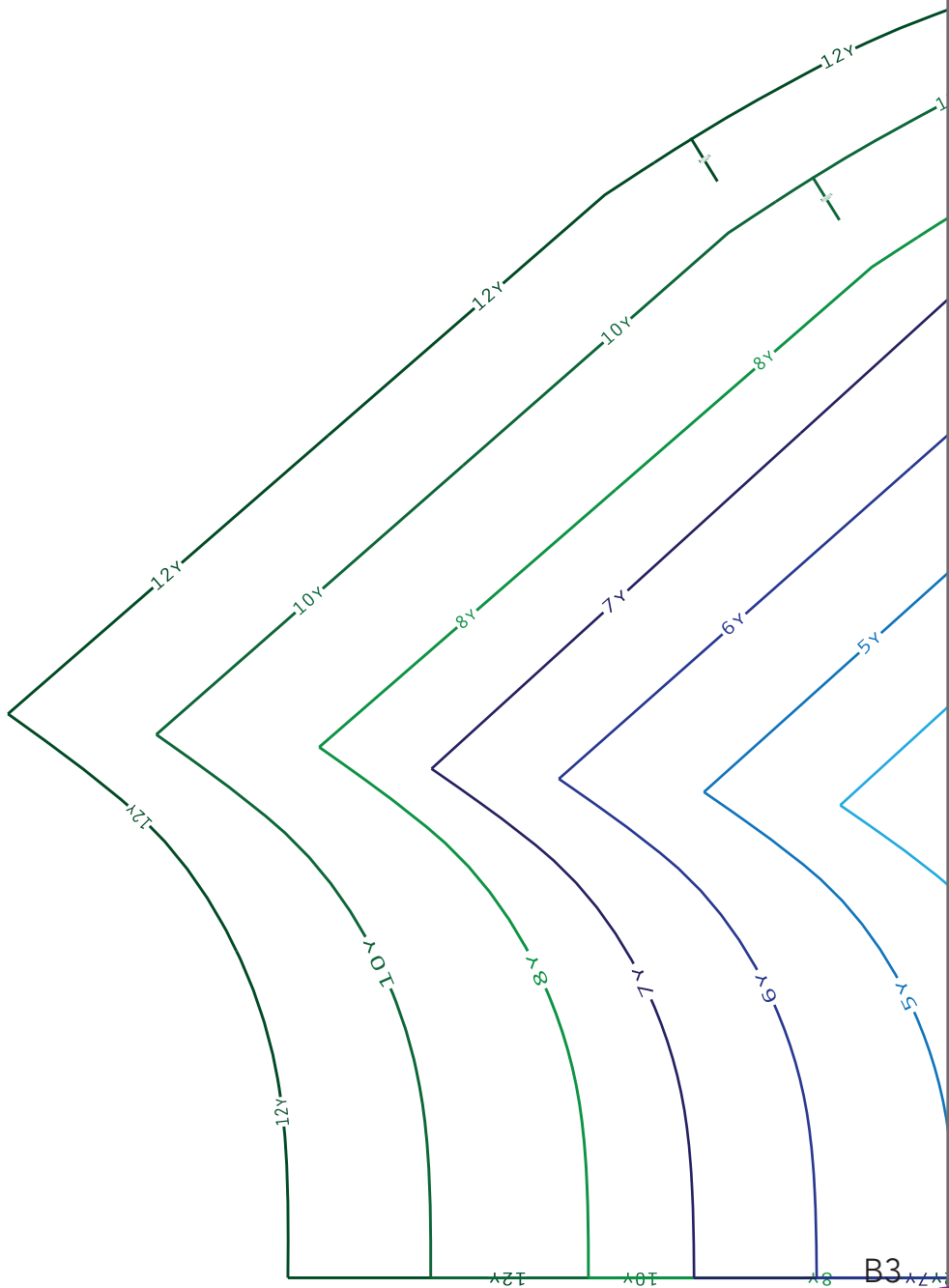


THIS PAGE IS NOT A PART OF THE PATTERN

**THIS IS WHAT THE PATTERN WILL LOOK LIKE
ONCE TAPED TOGETHER**

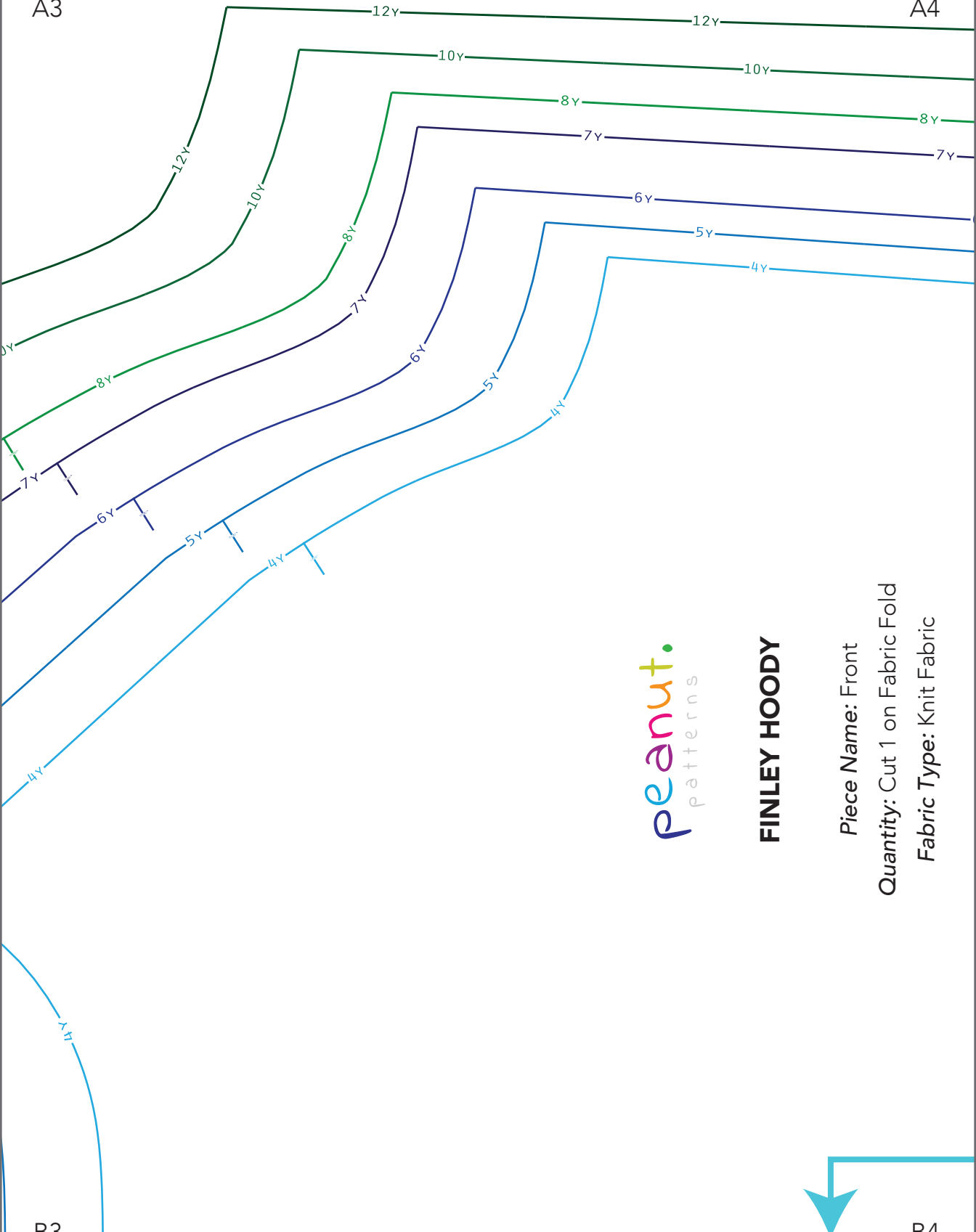
If you are just starting to sew, or new to PDF patterns, wait to cut your pattern pieces until you have taped all the pages together.





A3

A4



peanut.
patterns

FINLEY HOODY

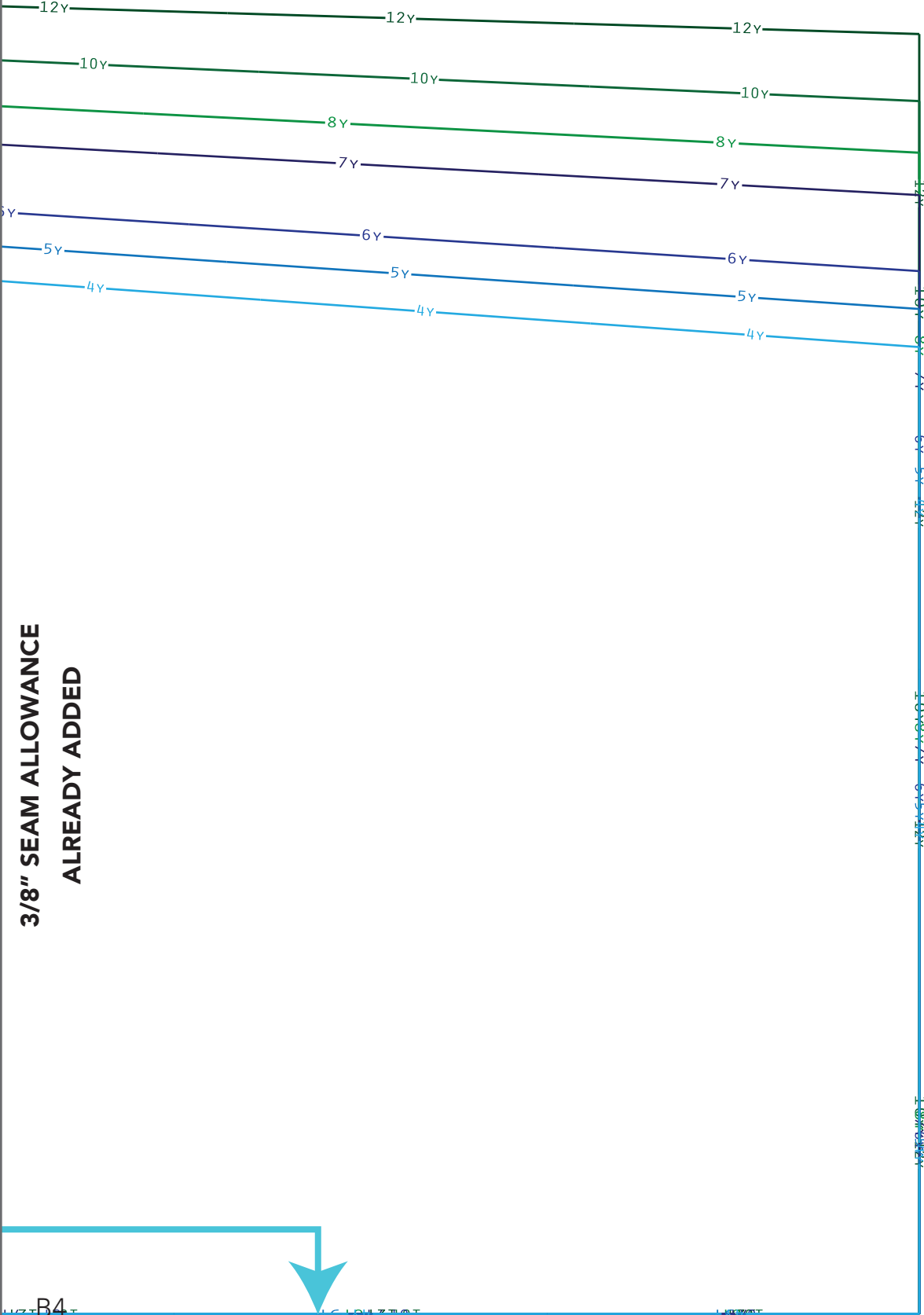
Piece Name: Front

Quantity: Cut 1 on Fabric Fold

Fabric Type: Knit Fabric

B3

B4

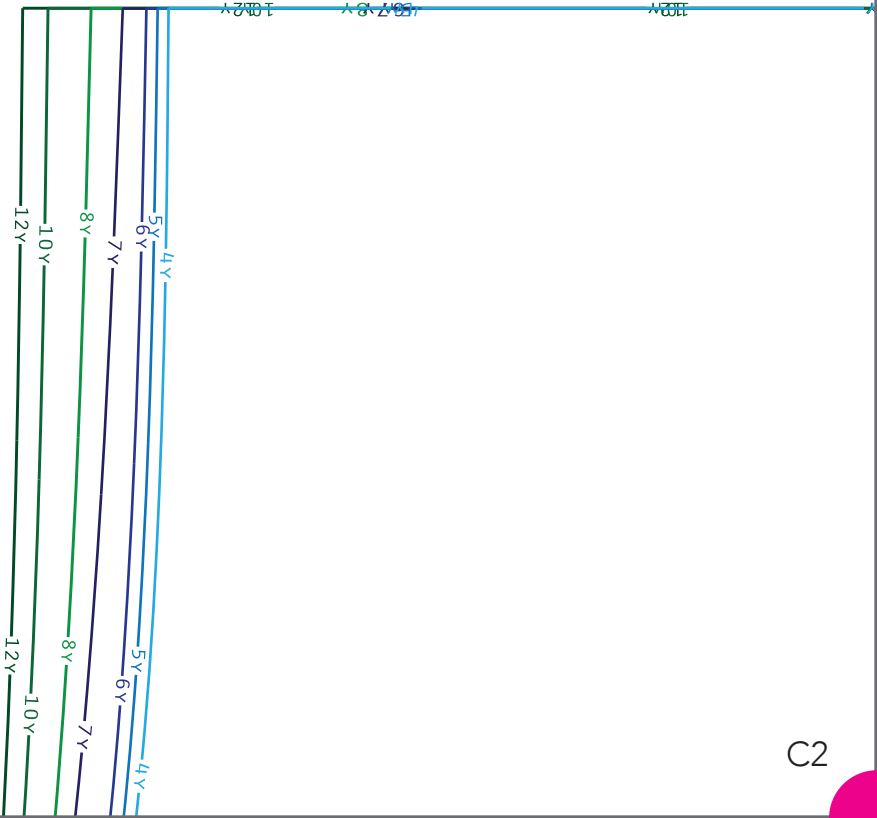


3/8" SEAM ALLOWANCE
ALREADY ADDED



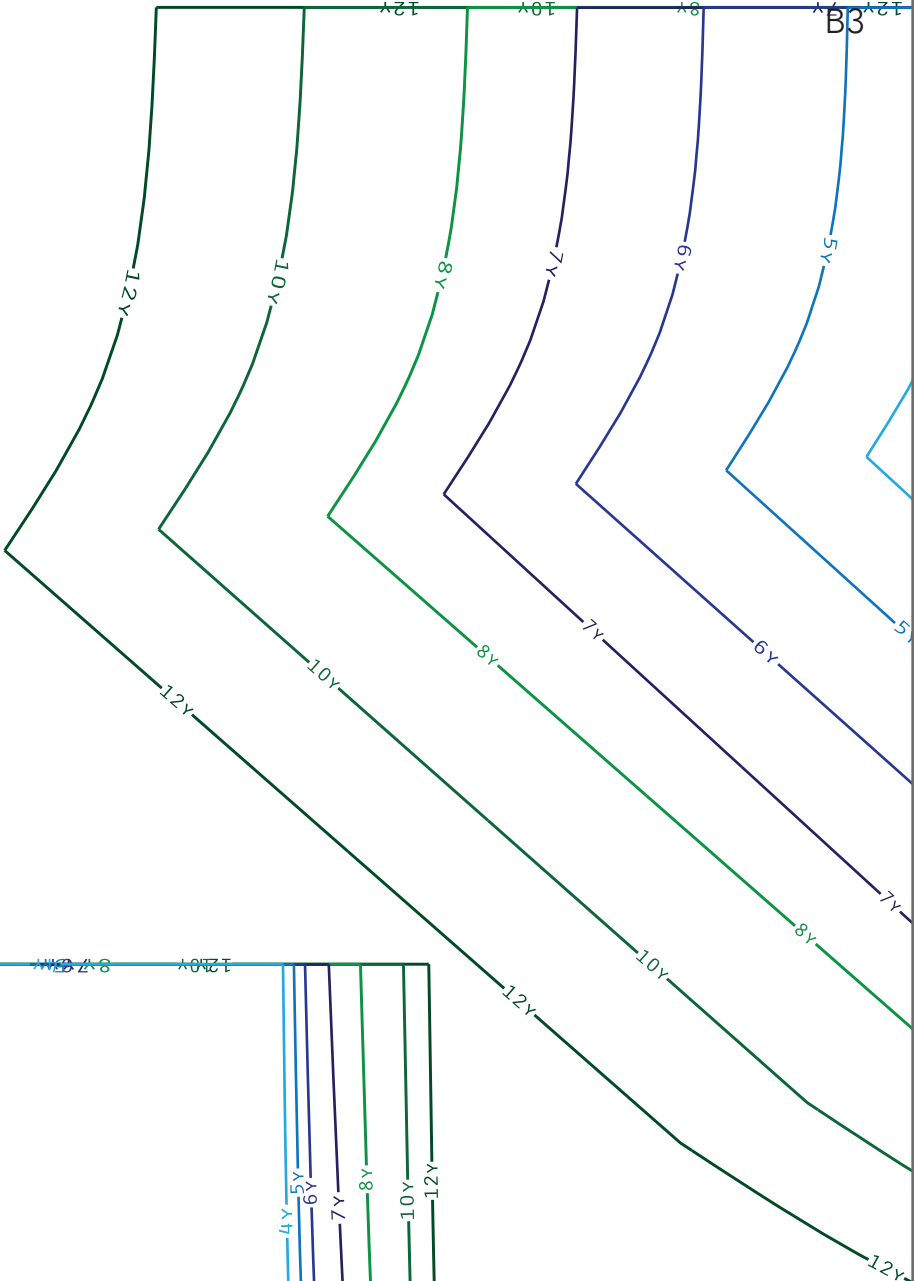
B1

B2



B2

B3

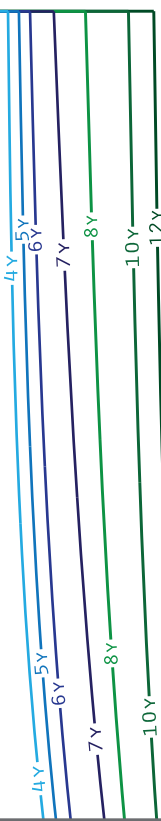


8

120y

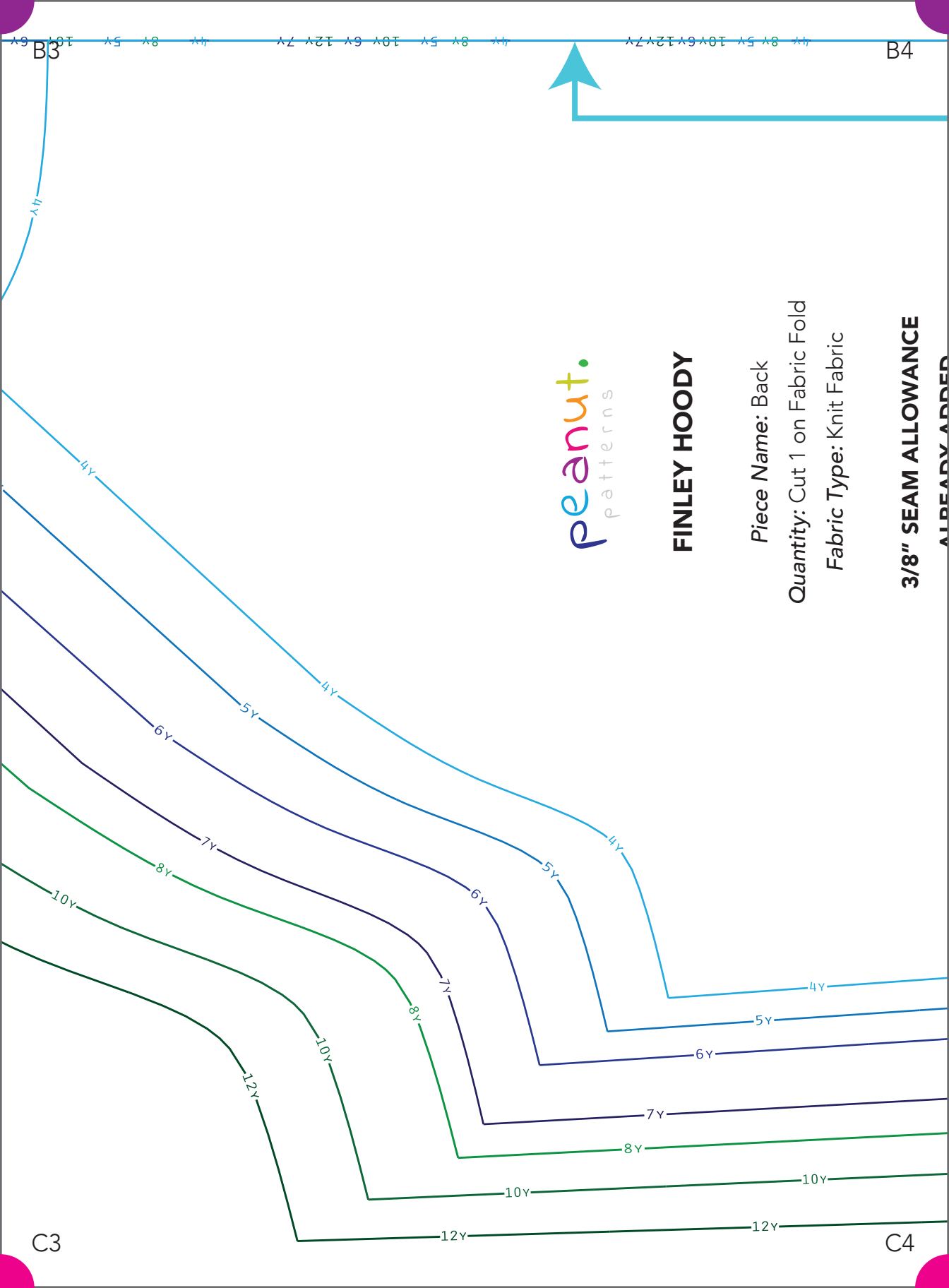
9-7 8M

120y



C2

C3



B3

B4

peanut.
patterns

FINLEY HOODY

Piece Name: Back

Quantity: Cut 1 on Fabric Fold

Fabric Type: Knit Fabric

3/8" SEAM ALLOWANCE

ALREADY ADDED

C3

C4

A 4 7 1 3 0 1 5 8 1 1

A 2 7 0 1 5 8 1

A 2 3 5

B4

B5

ALREADY ADDED

10Y-6Y

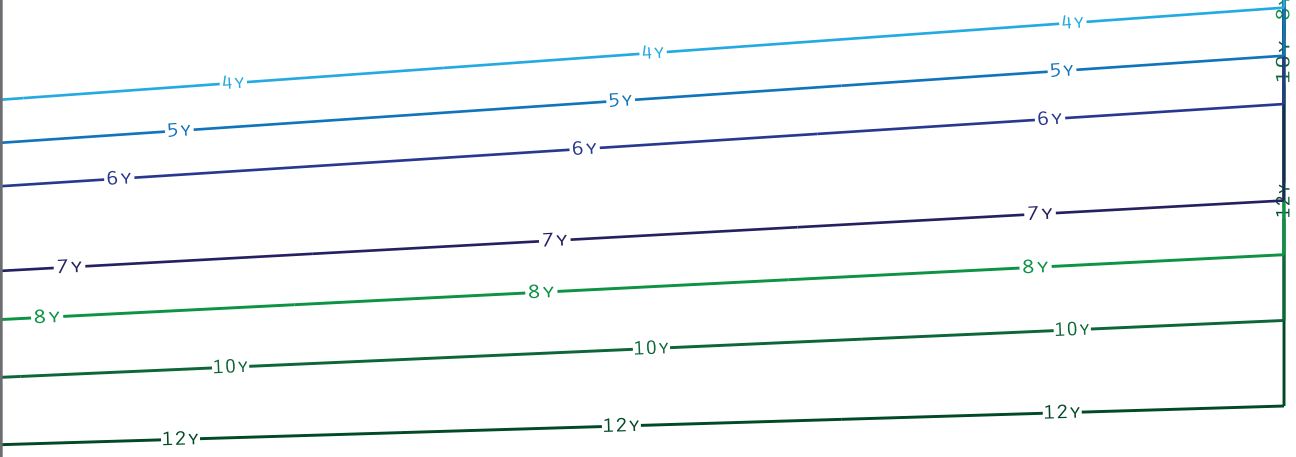
10Y-6Y 7Y 6Y-5Y 12Y

6Y 5Y 12Y

7Y

8Y 9Y 10Y

12Y



C4

C5

C1

C2

D1

D2

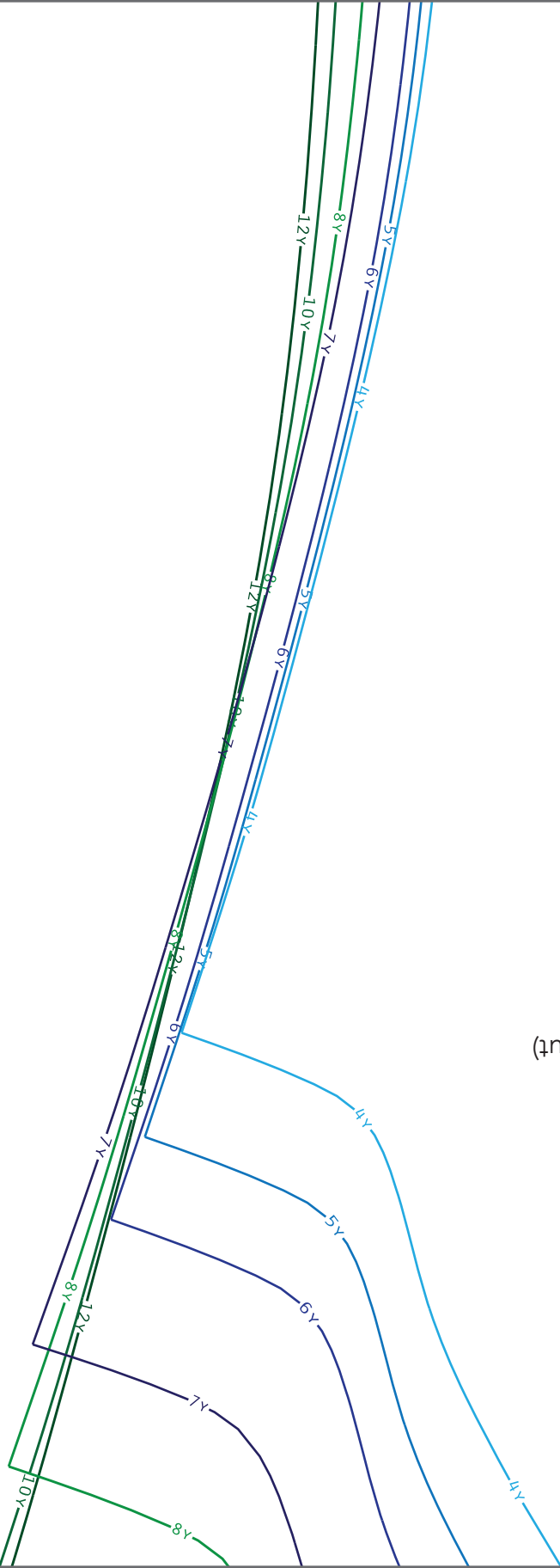
peanuti.
patterns

FINLEY HOODY

Piece Name: Sleeve

Quantity: Cut 2 (Flip Pattern on 2nd Cut)
Fabric Type: Knit Fabric

**3/8" SEAM ALLOWANCE
ALREADY ADDED**



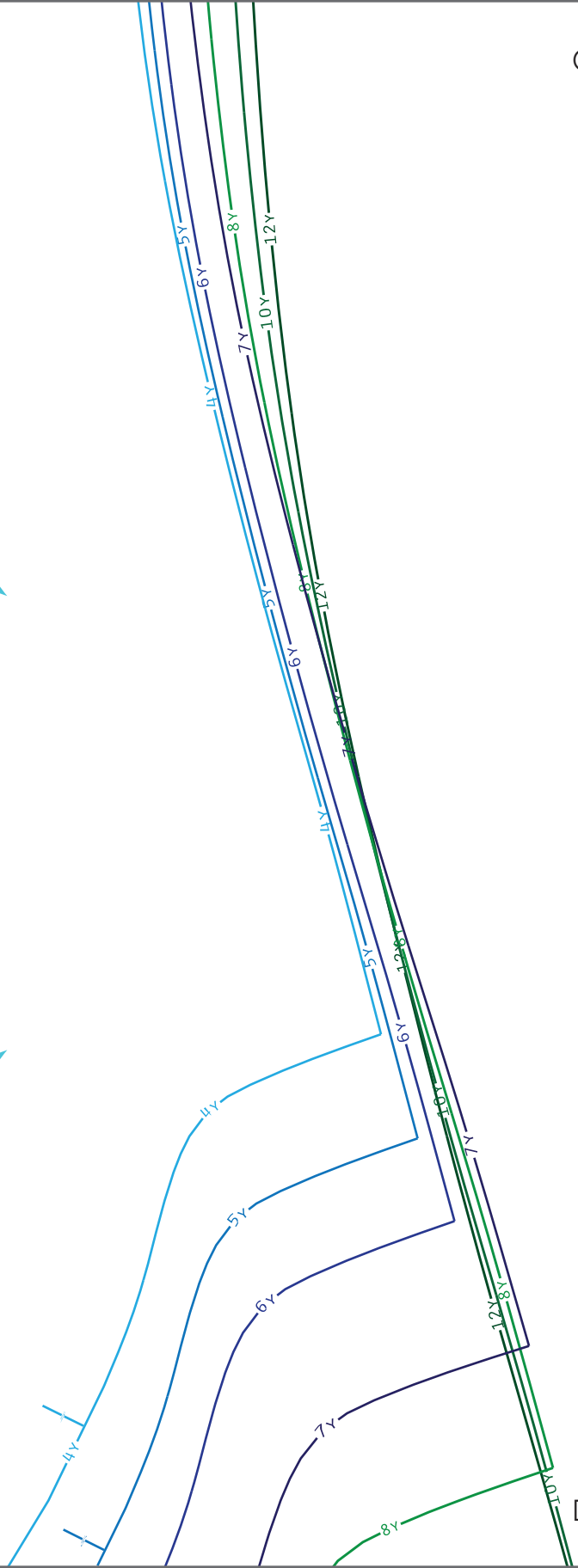
C2

C3



D2

D3



C4

Piece Name: Hood

Quantity: Cut 2 (Flip Pattern on 2nd Cut)

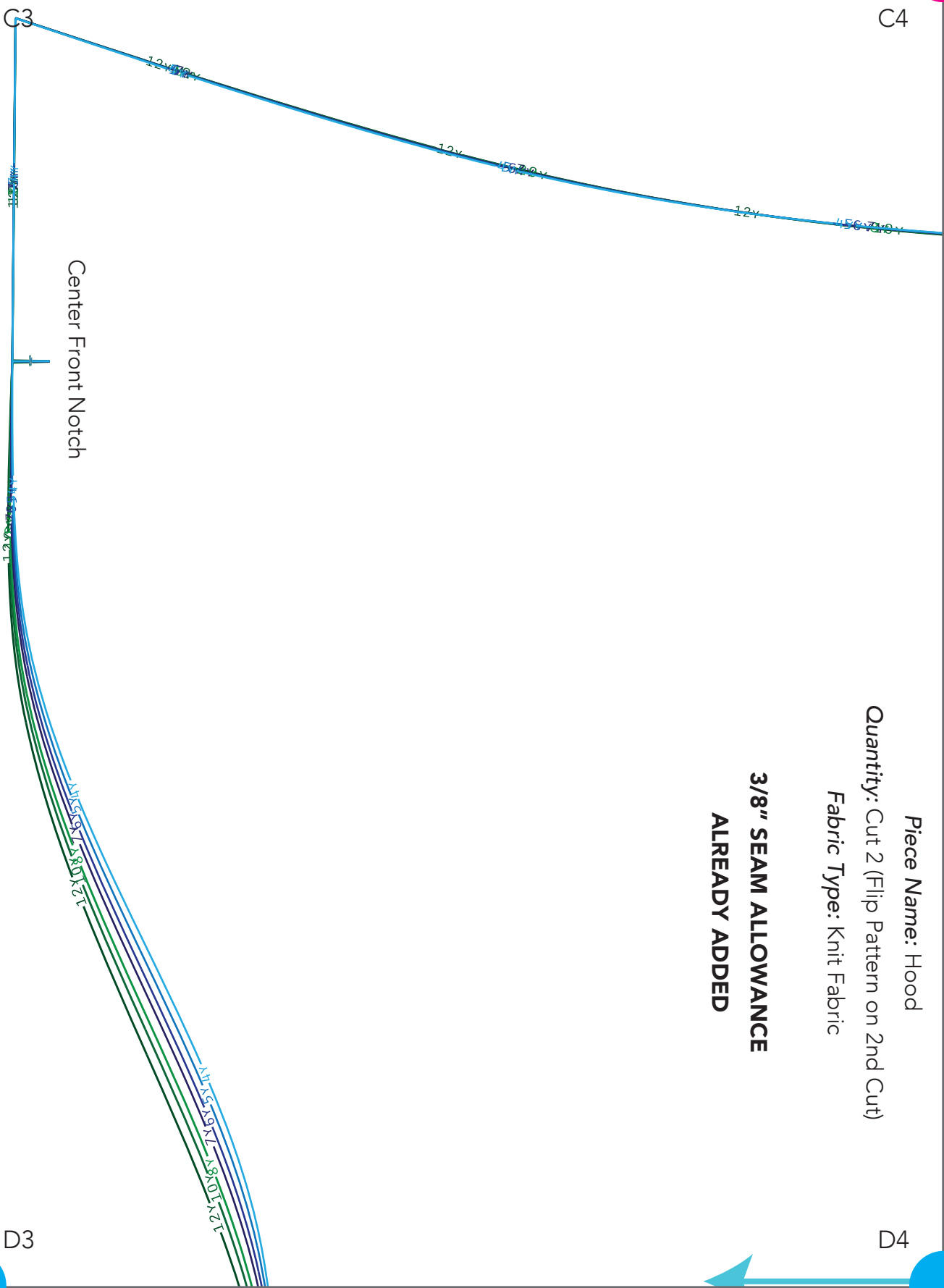
Fabric Type: Knit Fabric

**3/8" SEAM ALLOWANCE
ALREADY ADDED**

D4

C3

D3



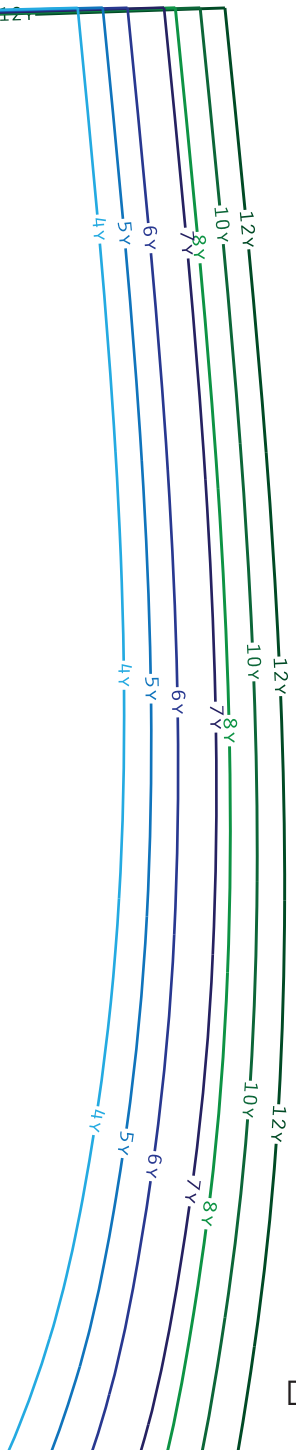
Center Front Notch

C5

C4

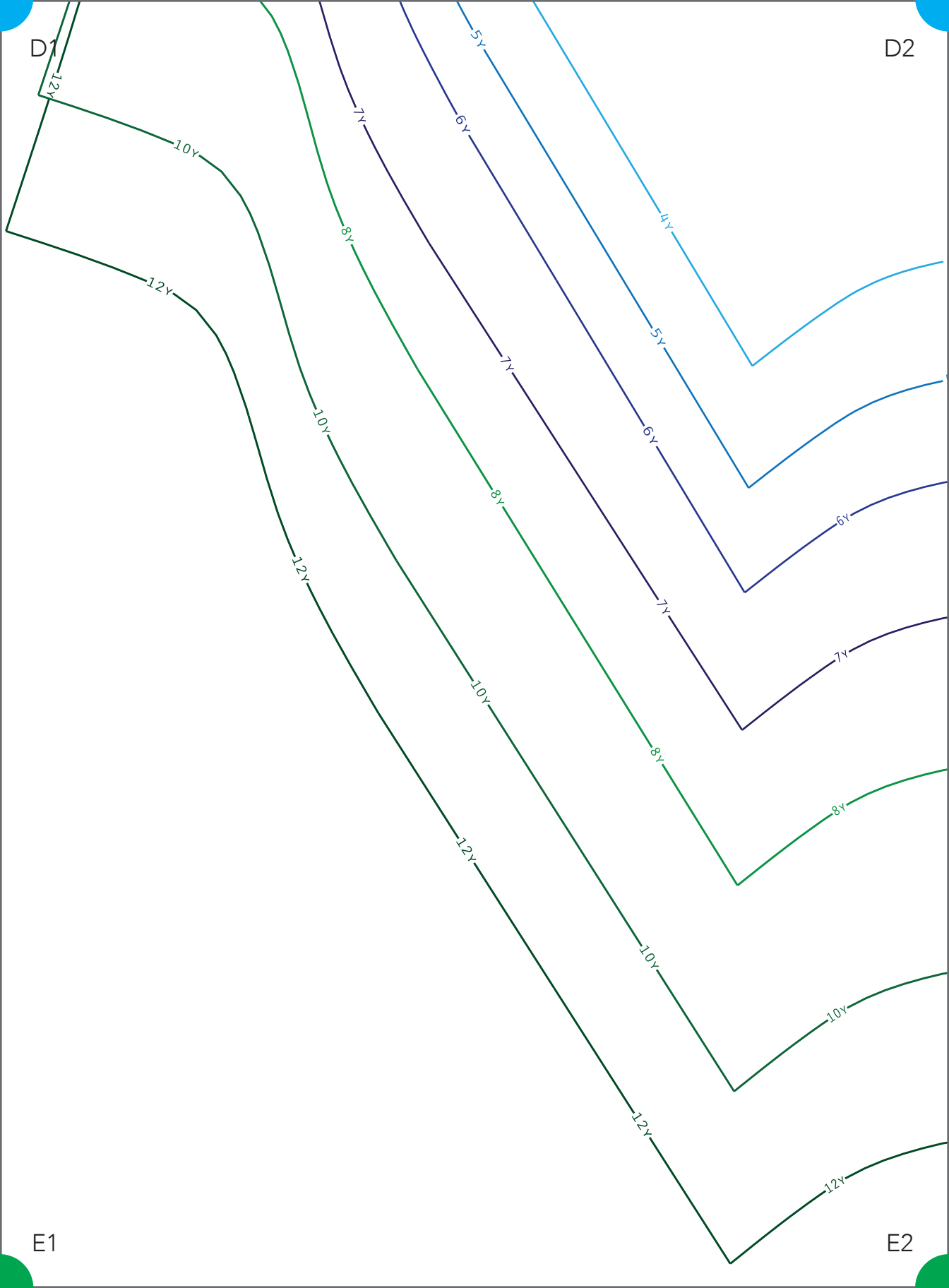
D5

D4



peanut.
patterns

FINLEY HOODY

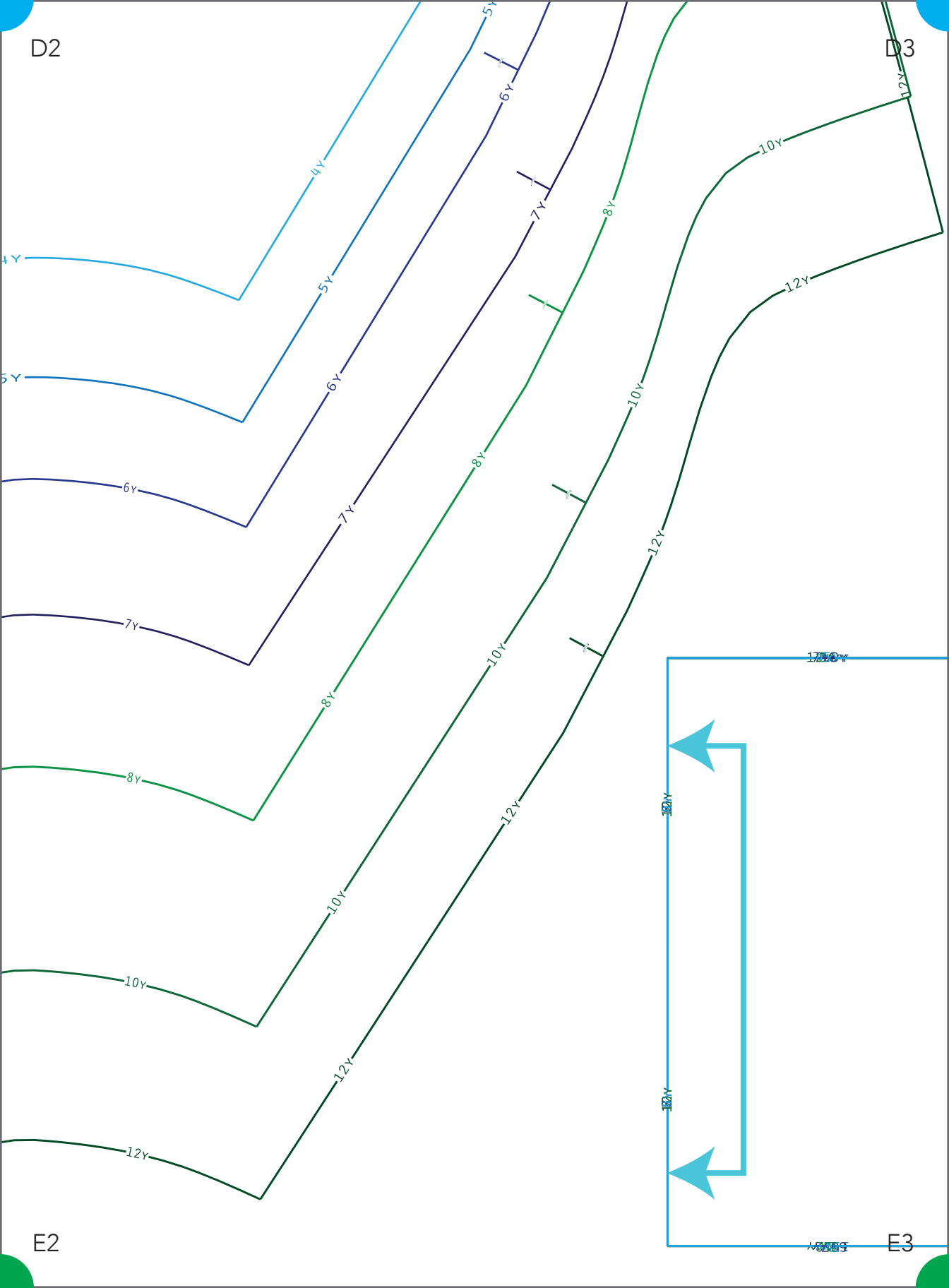


D1

D2

E1

E2



D2

D3

4y

5y

6y

7y

8y

10y

12y

4y

5y

6y

7y

8y

10y

12y

5y

6y

7y

8y

10y

12y

8y

10y

12y

10y

12y

12y

12y

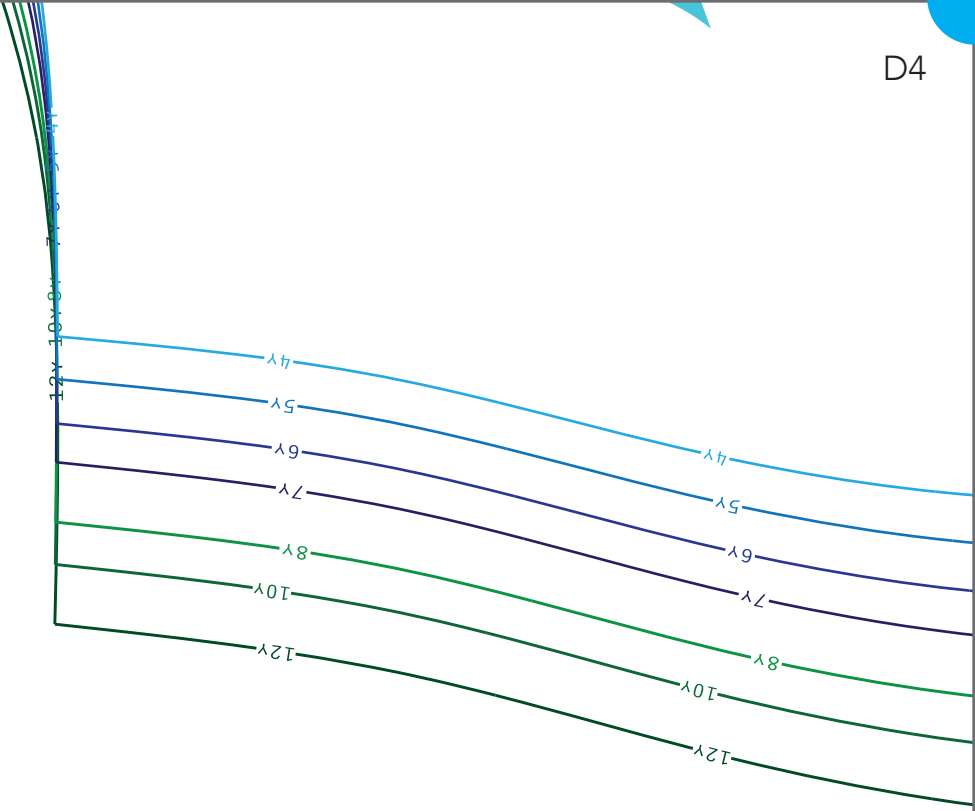
12y

12y

12y

E3

E2



12y 8-510y

12y 4+8y 5-10y

12y 4+8y 5y 10y 6y



FINLEY HOODY

Piece Name: Hem Band

Quantity: Cut 1 on Fabric Fold

Fabric Type: Knit Fabric

3/8" SEAM ALLOWANCE ALREADY ADDED

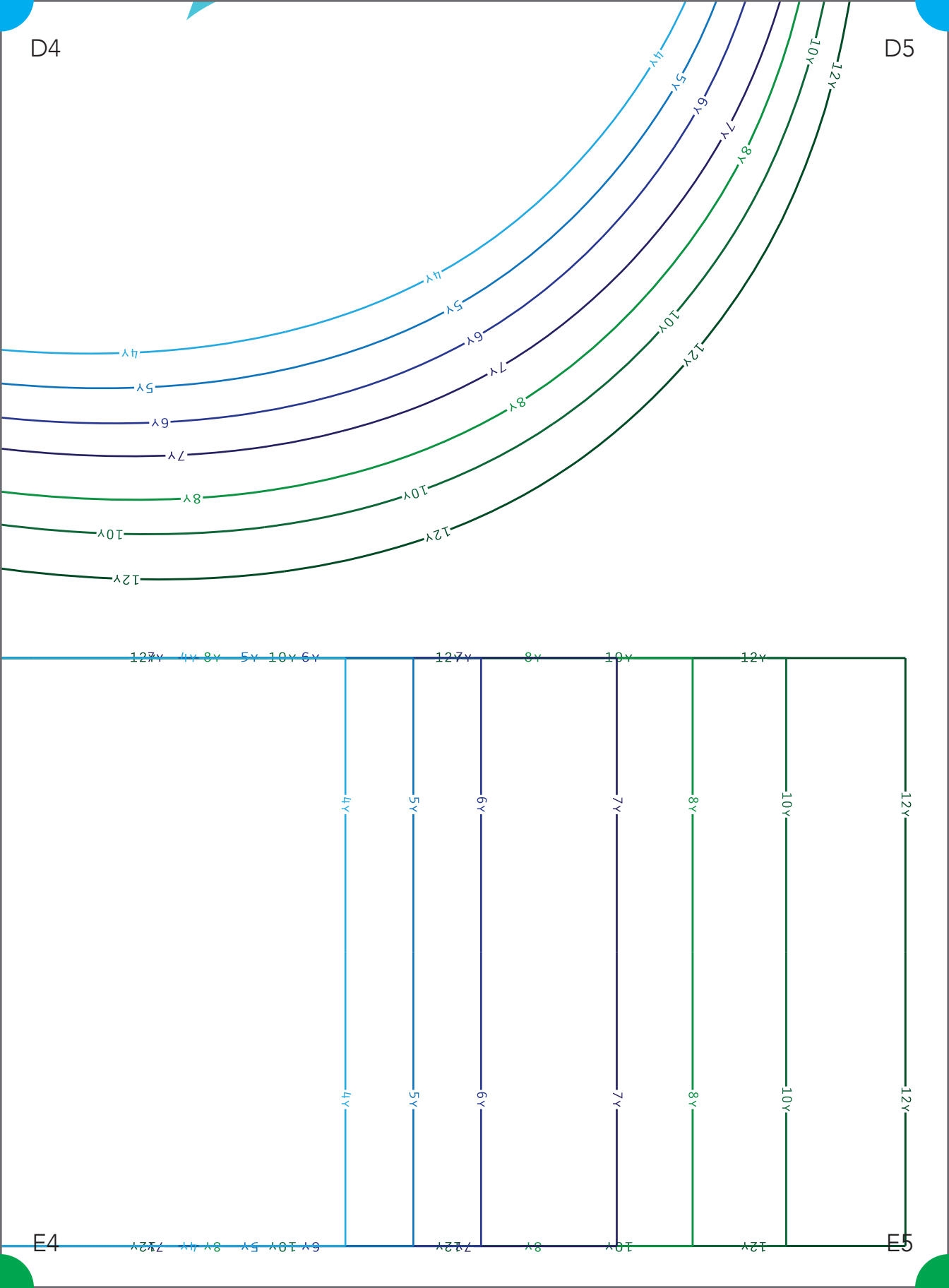
12y 8-510y

12y 4+8y 5-10y

12y 4+8y 5y 10y 6y

D4

D5



E4

E5