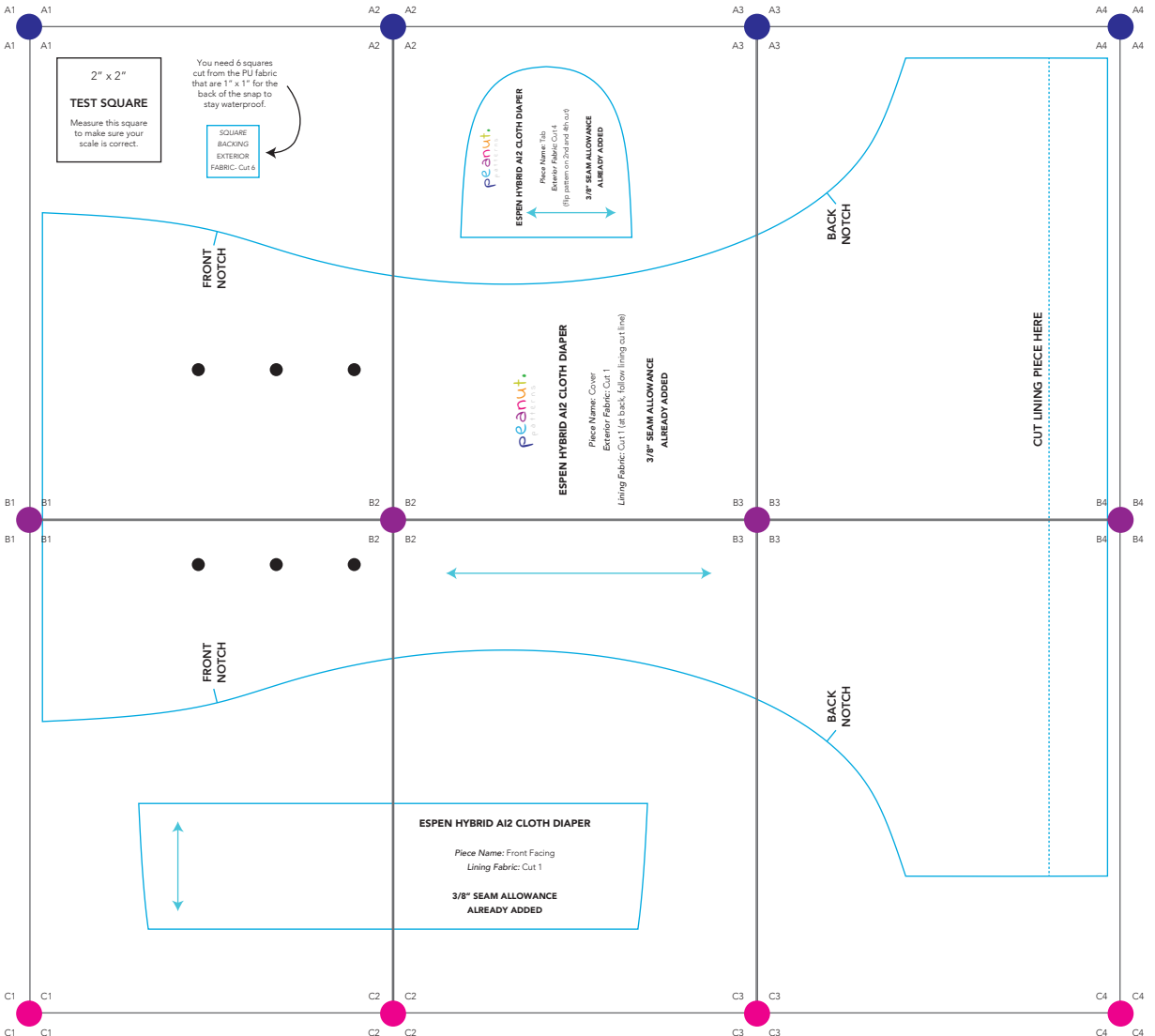


THIS PAGE IS NOT A PART OF THE PATTERN

THIS IS WHAT THE PATTERN WILL LOOK LIKE ONCE TAPED TOGETHER

If you are just starting to sew, or new to PDF patterns, wait to cut your pattern pieces until you have taped all the pages together.



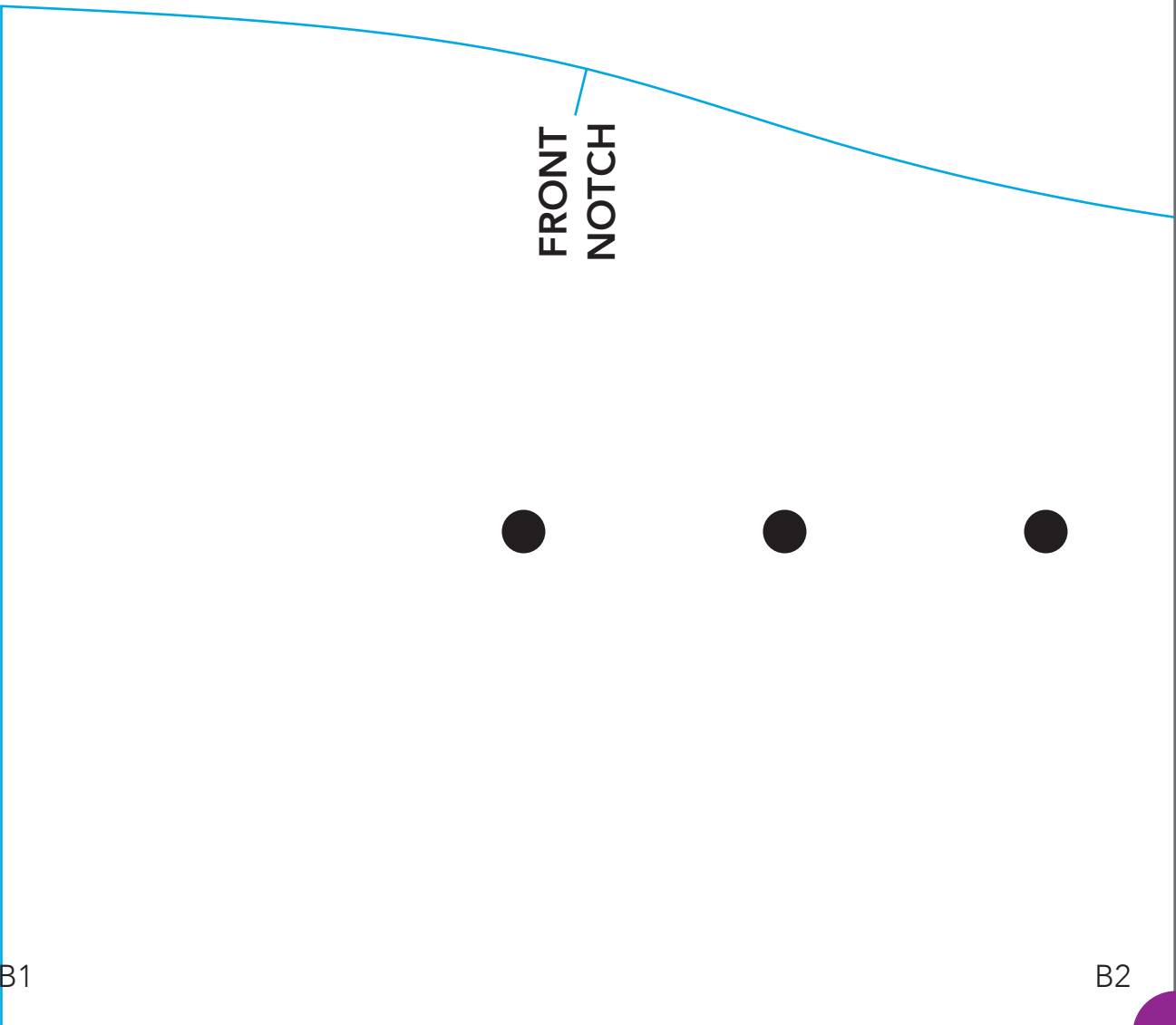
2" x 2"

TEST SQUARE

Measure this square to make sure your scale is correct.

You need 6 squares cut from the PU fabric that are 1" x 1" for the back of the snap to stay waterproof.

SQUARE
BACKING
EXTERIOR
FABRIC- Cut 6





ESPEN HYBRID AI2 CLOTH DIAPER

Piece Name: Cover

Exterior Fabric: Cut 1

Lining Fabric: Cut 1 (at back, follow lining cut line)

**3/8" SEAM ALLOWANCE
ALREADY ADDED**

A3

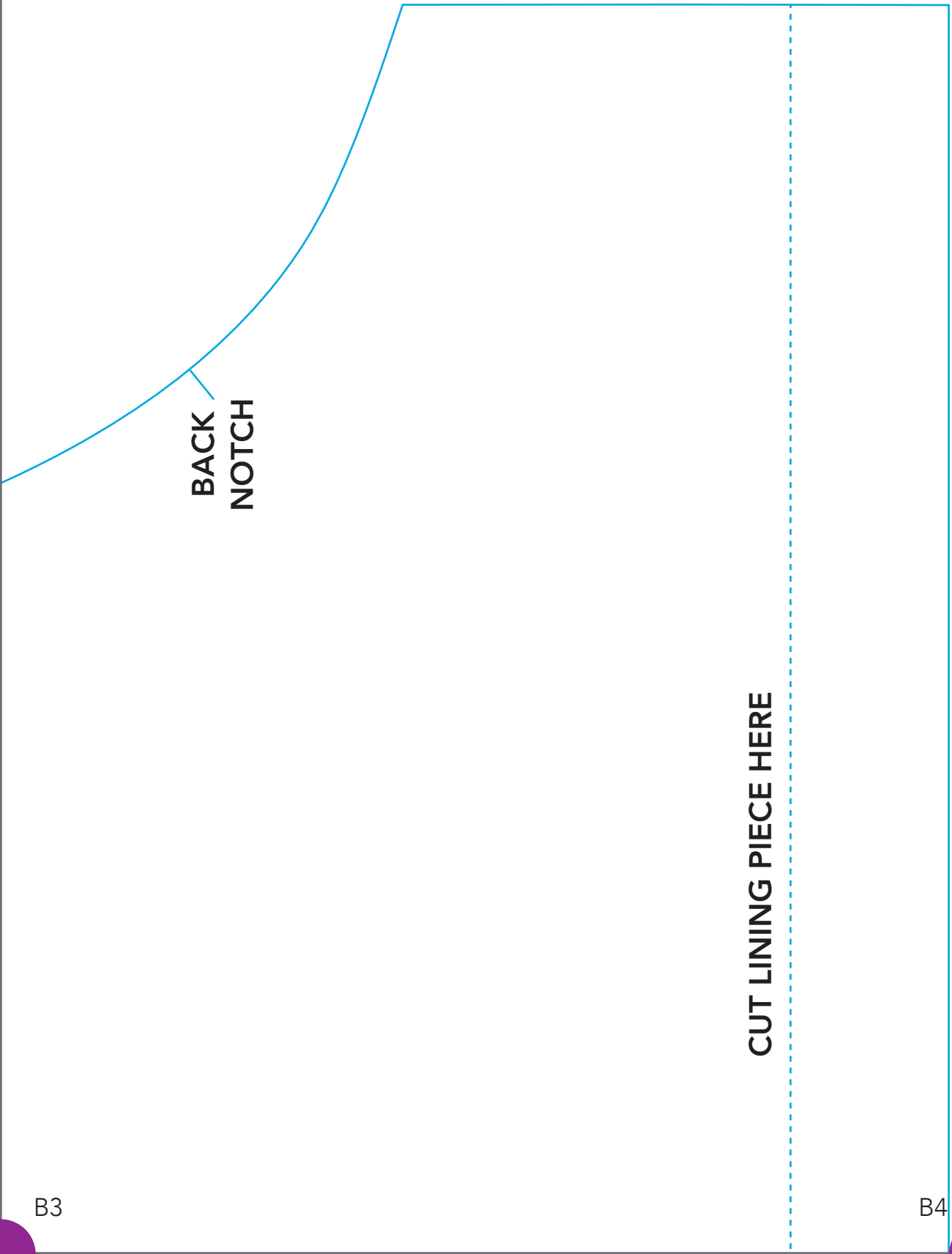
A4

**BACK
NOTCH**

CUT LINING PIECE HERE

B3

B4

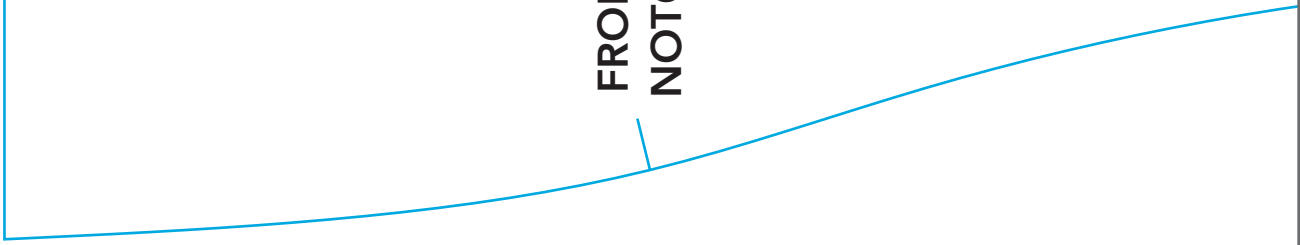


B1

B2



FRONT
NOTCH



C1

C2

B2

B3



ESPEN HYBRID AI2 CLOTH DIAPER

Piece Name: Front Facing

Lining Fabric: Cut 1

3/8" SEAM ALLOWANCE

ALREADY ADDED

C2

C3

B3

B4

**BACK
NOTCH**

C3

C4

